

# Az Zuweidin Village Profile



Prepared by



The Applied Research Institute – Jerusalem  
ARIJ

Funded by



Spanish Cooperation



Azahar program

2009

## Acknowledgments

*ARIJ hereby expresses its deep gratitude to the Spanish Agency for International Cooperation for Development (AECID) for their funding of this project through the Azahar Program.*

*ARIJ is grateful to the Palestinian officials in the ministries, municipalities, joint services councils, village committees and councils, and the Palestinian Central Bureau of Statistics (PCBS) for their assistance and cooperation with the project team members during the data collection process.*

*ARIJ also thanks all the staff who worked throughout the past couple of years towards the accomplishment of this work.*

## *Background*

This booklet is part of a series of booklets, which contain compiled information about each city, town, and village in Hebron Governorate. These booklets come as a result of a comprehensive study of all localities in Hebron Governorate, which aims at depicting the overall living conditions in the governorate and presenting developmental plans to assist in developing the livelihood of the population in the area. It was accomplished through the 'Village Profiles and Azahar Needs Assessment'; a project funded by the Spanish Agency for International Cooperation for Development (AECID) and the Azahar Program.

The 'Village Profiles and Azahar Needs Assessment' was designed to study, investigate, analyze and document the socio-economic conditions and the needed programs and activities to mitigate the impact of the current unsecure political, economic and social conditions in Hebron Governorate with particular focus on the Azahar program objectives and activities concerning water, environment, and agriculture.

The project's objectives are to survey, analyze and document the available natural, human, socioeconomic and environmental resources, and the existing limitations and needs assessment for the development of the rural and marginalized areas in Hebron Governorate. In addition, the project aims at preparing strategic developmental programs and activities to mitigate the impact of the current political, social, and economic instability with the focus on the agricultural sector.

All locality profiles in Arabic and English are available online at <http://proxy.arij.org/vprofile/>

## *Table of Contents*

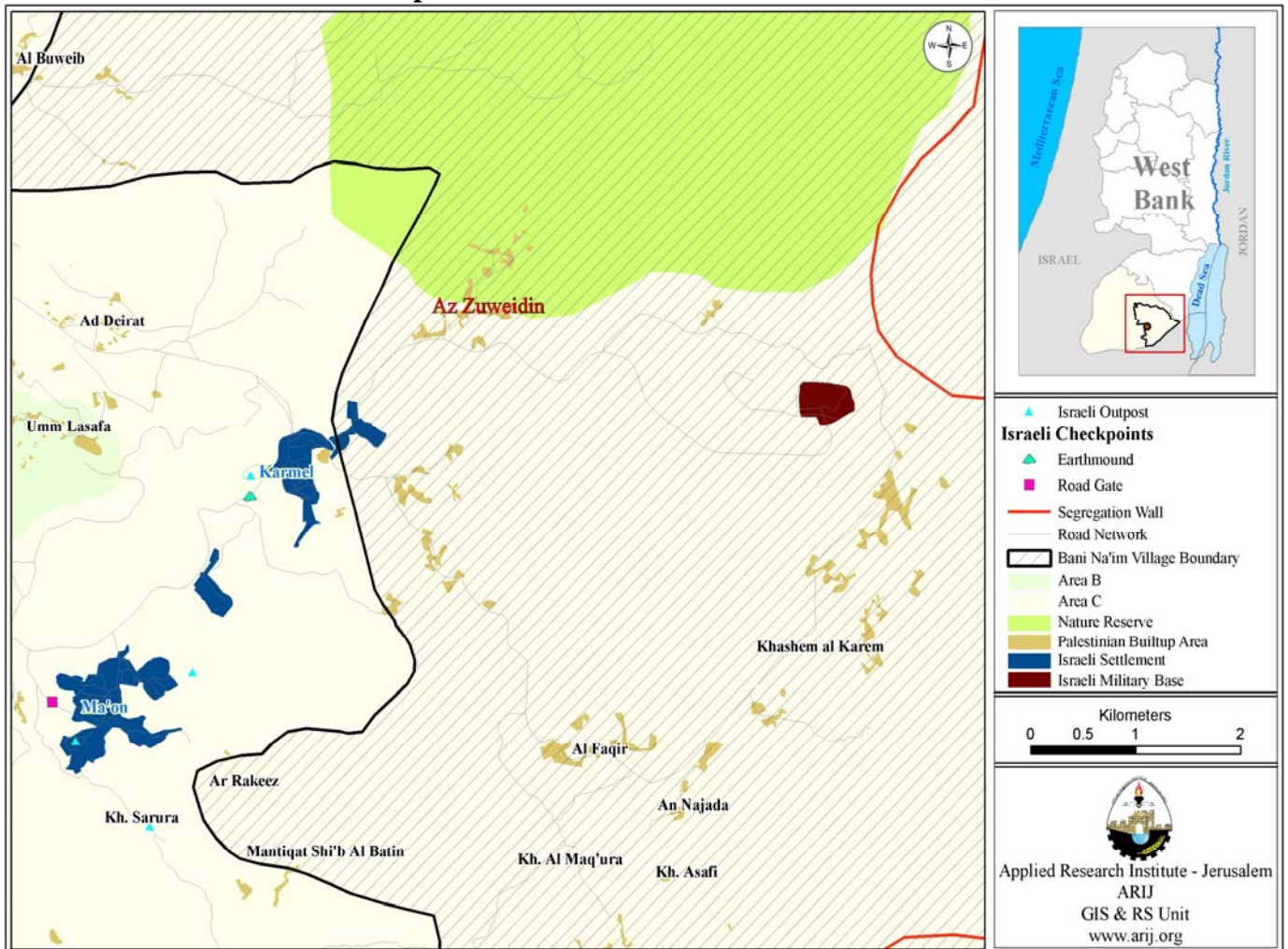
<i>Location and Physical Characteristics</i>	<u>4</u>
<i>History</i>	<u>5</u>
<i>Religious and Archaeological Sites</i>	<u>5</u>
<i>Demography and Population</i>	<u>6</u>
<i>Education</i>	<u>6</u>
<i>Health Status</i>	<u>7</u>
<i>Economic Activities</i>	<u>7</u>
<i>Agricultural Sector</i>	<u>9</u>
<i>Institutions and Services</i>	<u>11</u>
<i>Infrastructure Services</i>	<u>11</u>
<i>Impact of the Israeli Occupation</i>	<u>11</u>
<i>Development Plans and Projects</i>	<u>12</u>
<i>Locality Development Priorities and Needs</i>	<u>12</u>
<i>References</i>	<u>13</u>

# Az Zuweidin Village Profile

## Location and Physical Characteristics

Az Zuweidin Kha'abneh (Um Al Daraj) is a Palestinian Bedouin village in the Yatta area. It is located eight km south of Hebron City in the southern part of the West Bank. The village is bordered by the Dead Sea to the East, Bani Na'im to the North, Yatta to the West and bordered by Um Al kheir (Al Saria) village to the South.

**Map1: Az Zuweidin location and borders**



The total area of Az Zuweidin village is estimated to be 50,000 dunums, of which 1,780 dunums are Palestinian built-up areas, 35,000 dunums are agricultural land, and 13,220 dunums are forest and open spaces with little or no vegetation. There are about 100,000 dunums of the village land which were confiscated by the Israeli Forces.

Az Zuweidin village extends over a desert area west of the Dead Sea, at an elevation of 650 m above sea level. The mean annual rainfall is 369 mm; the average annual temperature is 16° C, and the average annual humidity is 61% (ARIJ GIS).

The village is considered to be a rural area as it meets the demographic and institutional criteria relevant to rural areas. The village is governed by village council, which was established in 1997, with six members; the village council has a room in the village school for use as an office. The services provided by the council are:

1. Infrastructural services: providing the village with electricity, collecting solid waste and paving and maintaining roads.
2. Social and human services: providing the people with food, seeds and any other supplies.
3. Other services: such as rehabilitating and constructing institutions, mosques and schools.

## History

According to the village council data, Az Zuweidin is an old village dating back to Canaanite era, the name of the village is deriving from the tribal name "Az Zuweidin" which is a branch from a larger tribe called "Kha'bneh". The data reveals that Az Zuweidin residents originate from the village and have been living in the area for a very long time.

**Photo of Az Zuweidin village**



## Religious and Archaeological Sites

There is one mosque in Az Zuweidin village for worship, "Al Rodwan Mosque". In terms of archaeological sites, there are a lot of grottos and old wells that have existed since ancient times.

## Demography and Population

According to the Palestinian Central Bureau of Statistics (PCBS) Census in 2007, the total population of Az Auweidin village was 813 inhabitants, of whom 420 inhabitants were males and 393 were females. There are 76 households in the village lived in 116 housing units.

### Age Group and Gender

Population, Housing and Establishment Census – 2007, Final Results shows the distribution of population by age group and sex in Az Zuweidin village as shown. The results indicated that the constitutes majority of the population are under the age of 14, constituting 58.3% of the total population, while the age group 15-46 constitutes 39.5% of the total population and the 65 years or above constituting only 2% of the total population.

The sex ratio in the village is 106.8 males per 100 females. In terms of percentage, the males in the village constitute 51.6% of the total population while the females constitute 48.4%.

### Families

The families of Az Auweidin village descent from the main tribe "Az Auweidin" which including the following families: Et'hamat , Al Taymen, Basayta, Ammreen and Ershadat .

### Education

According to PCBS, Population, Housing and Establishment Census-2007, Final Results, about 23% of the population 10 years and over were illiterate, where the percentage of illiterate among female is higher compared with male with percentage equal 76.2% for female and 23.8% for male. Of the literate population, 30.9% of residents could read and write, 22.3%, 13.6% and 10.3% of the population (10 years and over) completed their elementary, preparatory and secondary and associate diploma or above, see table 1.

Sex	Illiterate	Can read & write	Elementary	Preparatory	Secondary	Associate Diploma	Bachelor	Higher Diploma	Master	PHD	Total
M	25	77	62	38	22	-	7	-	1	-	232
F	80	64	40	24	15	-	2	-	-	-	225
<b>T</b>	<b>105</b>	<b>141</b>	<b>102</b>	<b>62</b>	<b>37</b>	<b>-</b>	<b>9</b>	<b>-</b>	<b>1</b>	<b>-</b>	<b>457</b>

Source: PCBS, March 2009. Population, Housing and Establishment Census-2007, Final Results

The field survey data indicated that there is one school in the village "Az Zuweidin Elementary Co-education School". The school is supervising by Ministry of Higher Education (MOHE), and it provides elementary education to the students. According to MOHE database, there are 230 students (121 male and 109 female), 10 co-education classes and 9 teachers in the school. There is no kindergarten in the village.

The school in Az Zuweidin village is not sufficient, and does not cover all stages. For these stages the students in the village are required to travel a distance to reach a neighboring school so as to complete their secondary education, they travel about 4 km to reach Um al Kheir village to complete the literary stream and about 25 km to Yatta city to complete their secondary scientific stream.

The educational sector in the village is suffering from many obstacles, which are:

- Lack of schools especially for girls,
- Distance to schools in neighboring villages and high cost of transportation,
- Lack of classes and overcrowding.
- Lack of science or computer labs and other services.

## **Health Status**

There is one Maternity and Pediatric health center in Az Zuweidin village, this center provides simple health services and is supervised by the Palestinian Ministry of Health (MOH).

The village officials state that the residents in the village are suffering from a lack of health services, the residents being required to travel about 25 km to reach Yatta health services centers and about 35 km to reach Hebron city for hospital services.

The main problems facing health services and threatening the health situation in the village are the lack of health centers, medical equipments, doctors, ambulances, and pharmacies.

## **Economic Activities**

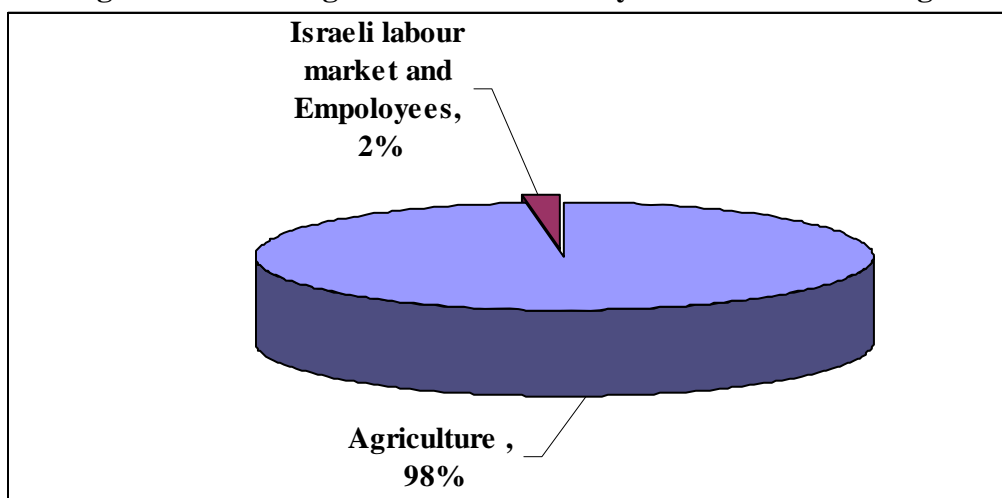
Az Zuweidin is a Bedouin village, known for agricultural activities especially of livestock; almost all the residents of village keep livestock. 98% of the residents depend on the agricultural sector as a main source of income, a small number of the residents working in Israeli labor market and working in the public and private sector. Az Zuweidin village lacks of any economic institutions; there are no shops, groceries or any other services.

According to the estimates of village officials, the economic base of the village consists of the following sectors:

- Agricultural Sector (98%)
- Israeli Labor Market and Employees (2%)



**Figure 2: Percentage of economic activity in Az Zuweidin village.**



Based on the survey conducted in 2007 by ARIJ in Hebron Governorate localities, the social groups in the village most affected by the Israeli restrictions during the second Intifada were: 1) Small-holding farmers, 2) previous workers in the Israeli labor market, 3) Families maintaining 6 individuals and more, 4) Housewives and children.

The village officials indicated that there has been a decrease in the cultivation of land because farmers find marketing their products difficult as a result of the Israeli activities, closures and lack of transportation (ARIJ database, 2006).

**Labor Force**

According to PCBS Census in 2007, the results indicated that about 22% of the populations in Az Auweidin were economically active people, while 78% were non-economically active persons. Out of the economically active persons, 87% were employed persons of whom 97.7% were males. Out of the non-economically active persons, 50.4% were students, 39.2% were housekeeping and 10.4% were unable to work or not working and not looking for work (see table 2).

<b>Table 2: Az Auweidin Population (10 years and over) by sex and activity status</b>											
Sex	Economically Active				Not Economically Active						Total
	Employed	Unemployed Ever work	Unemployment Never work	Total	Student	House keeping	Unable to work	Not working & Not looking for Work	Others	Total	
<b>M</b>	85	4	9	98	94	14	11	-	15	134	<b>232</b>
<b>F</b>	2	-	-	2	86	126	10	-	1	223	<b>225</b>
<b>T</b>	<b>87</b>	<b>4</b>	<b>9</b>	<b>100</b>	<b>180</b>	<b>140</b>	<b>21</b>	<b>-</b>	<b>16</b>	<b>357</b>	<b>457</b>

Source: PCBS, March 2009. Population, Housing

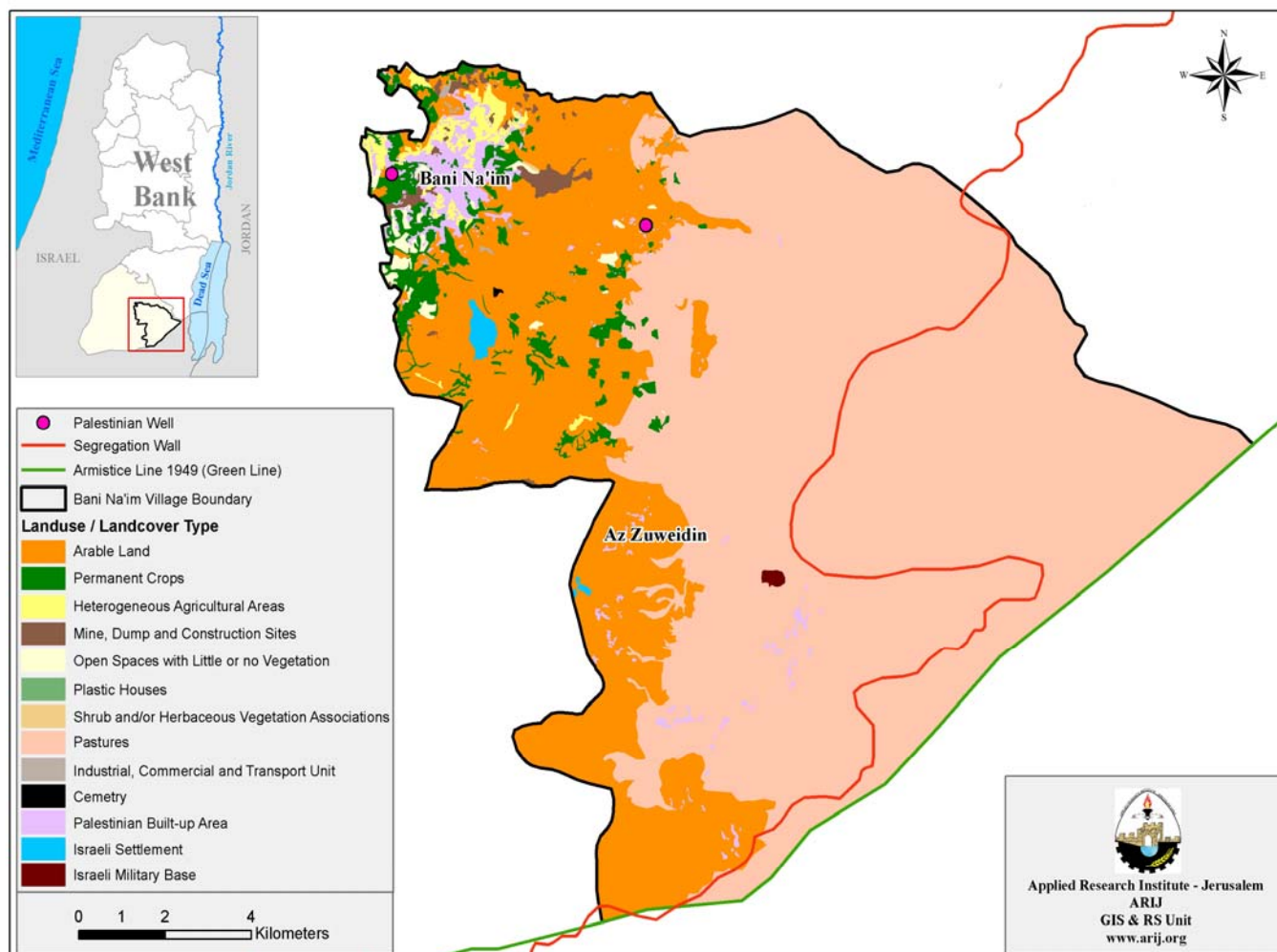
### Agricultural Sector

The total area of Az Zuweidin village is 50,000 dunums, of which 35,000 dunums are arable land. Out of the total arable lands, there are only about 9,200 dunums cultivated, due to the lack of water resources in the village. The main cultivated crops in the village are filed crops and fruit trees.

Total Area	Arable Land		Built up Area	Forests Area	Open Spaces and Rangelands
	Cultivated Area	Uncultivated Area			
50,000	9,200	25,800	1,780	0	13,220

Source: Palestinian Ministry of Agricultural (MoA), 2006

**Map 2: Land use/ land cover and the Segregation Wall in Az Zuweidin village**



Az Zuweidin village there is no cultivation of vegetables due to a shortage of water, as shown in table 4 no kind of vegetables cultivated are in the village.

Stone fruits are the only fruit trees planted in the village with a total area equal 90 dunums. Other fruit trees are not planted in the village.

Olives		Citrus		Stone-Fruits		Pome Fruits		Nuts		Other Fruit		Total area	
Rf	Irr	Rf	Irr	Rf	Irr	Rf	Irr	Rf	Irr	Rf	Irr	Rf	Irr
0	0	0	0	90	0	0	0	0	0	0	0	90	0

Rf: Rain-fed, Irr: Irrigated

Table 5 shows that Az Zuweidin village depends mainly on field crops, the total field crops cultivated in the village reach 10,000 dunums, of these crops, cereals, in particular wheat and barley, are the most cultivated crops with an area of about 8,205 dunums. In addition, the village cultivation of forage crops such as bitter vetch and common vetch is popular in the village of Az Zuweidin.

Cereals		Bulbs		Dry Legumes		Forage Crops		Stimulating Crops		Total area	
Rf	Irr	Rf	Irr	Rf	Irr	Rf	Irr	Rf	Irr	Rf	Irr
8,205	0	0	0	650	0	1,150	0	0	0	10,005	0

RF: Rain-fed, Irr: Irrigated

The data also indicates that the residents of the village are also dependent upon rearing and keeping livestock, where in Az Zuweidin village, about 98% of the residents keep livestock. Table 6 shows the number of livestock in Az Zuweidin village.

Cows*	Sheep	Goats	Donkeys	Broilers	Bee Hives
0	3,350	2,000	45	10,300	0

\*Including cows, bull calves, heifer calves and bulls

The main source of water for irrigation in the village is rain. The total length of the agricultural roads in the village of Az Zuweidin are 5,000 m, which it are unpaved and suitable only for tractors, other agricultural machines and animals, but these are not sufficient.

The agricultural sector in the village is suffering from a lack of agricultural services and veterinary services. In addition, there is a lack of capital, an increasing price of forages, and confiscation and destruction of land by Israeli Forces.

## Institutions and Services

Az Zuweidin village is a small village, getting most of its services from Yatta city and the neighboring villages. The main institution in the village is the village council which was established in 1997 and arranges most of the residents' services.

### Infrastructure Services

**Telecommunication Services:** Az Zuweidin village is not yet connected to the telecommunication network.

**Water Services:** Az Zuweidin village has been connected to a water network since 1983. Initially the water was supplied by Israeli Water Company (MECOROT) but today the water is supplied by the Palestinian Water Authority. About 40% of the households are connected to the water network in the village. The alternative resources of water used in the village are cisterns.

The main obstacles facing the village regarding water status are the damaged and aged network which explains the high water loss (50%), and the water network does not serve all the housing units in the village.

**Electricity Services:** Az Zuweidin village is not yet connected to an electricity network.

**Sewage Disposal Facilities:** Az Zuweidin village is not connected to sewage disposal network, and the waste water is disposed of in cesspits.

**Solid Waste Collection Services:** There is no solid waste service system in the village, and each household must dispose of its own garbage randomly by burning it in open area.

**Transportation Facilities:** Az Zuweidin village lacks official transportation services, the residents mostly use their private cars or go to nearby villages in order to find transport to travel outside the area. Only two informal taxis provide public transportation services in the village.

In terms of road quality, Az Zuweidin has about 11 km of road network including main roads, internal roads and agricultural roads just 2 km of main roads are paved but in bad condition and the remaining roads (9 km) are unpaved.

## Impact of the Israeli Occupation

Az Zuweidin is subject to heavy Israeli procedures in the south of Hebron, first there is an Israeli settlement to the West side of the village extending over 1,000 dunums, secondly, to the East of the village there is an Israeli military base lying on 100,000 dunums of village land which is used for military training. Due to these procedures Az Zuweidin residents can't access their land and grass for their livestock.

The Israeli Forces destroyed two barracks in the village since the beginning of the Second Intifada.

### Development Plans and Projects

Village officials cite that in the last two years, the village hasn't implemented any projects in the village.

### Locality Development Priorities and Needs

According to Az Zuweidin village council, the village is suffering from a shortage of many infrastructural and services needs. Table 7 below shows the development priorities and needs in the village.

<b>Table 7 Development priorities and needs for Az Zuweidin village</b>						
No.	Sector	Strongly Needed	Needed	Moderately Needed	Not Needed	Notes
<b>Infrastructural Needs</b>						
1	Opening and Pavement of Roads	*				10 km
2	Construction of New Water Networks	*				4 km
3	Rehabilitation of Old Water Networks	*				2 km
4	Construction of Water Reservoirs		*			10,000 m <sup>3</sup>
5	Extending the Water Network to cover New Built up Areas		*			1 km
6	Construction of Sewage Disposal Network			*		
<b>Health Needs</b>						
1	Building of New Clinics or Health Care Centre	*				
2	Rehabilitation of Old Clinics or Health Care Centres	*				
3	Purchasing of Medical Equipments and Tools	*				
<b>Educational Needs</b>						
1	Building of New Schools		*			Secondary
2	Rehabilitation of Old Schools	*				Preparatory
3	Purchasing of New Equipments for Schools	*				
<b>Agriculture Needs</b>						
1	Rehabilitation of Agricultural lands	*				10,000
2	Building Cisterns		*			25
3	Construction of Barracks for Livestock		*			50
4	Veterinary Services	*				
5	Seeds and Hay for Animals	*				
6	Rehabilitation of Greenhouses				*	
7	Field Crops Seeds	*				
8	Plants and Agricultural Supplies	*				

**References:**

- Applied Research Institute – Jerusalem (ARIJ). *GIS Database*. 2006-2009.
- Ministry of Agriculture. *Agricultural Status Database in Hebron Governorate*. 2006.
- Ministry of Higher Education. *Educational Status Database*. 2006-2007.
- Palestinian Central Bureau of Statistics. *Population, Housing and Establishment Census- Final Results*. Ramallah, Palestine. 1997 -2007.